

What is not to be put in the bin?

Hazardous waste

Contaminated waste is to be collected separately. The hazardous waste collection point accept household quantities free of charge.

Problem waste includes:

- Waste oil
- Batteries, rechargeable batteries
- Chemicals, poisons
- Electrical appliances (e.g. television set, toaster, PC, coffee percolator, vacuum cleaner, refrigerator, washing machine, electric cooker)
- Energy-saving lamps, fluorescent tubes
- Varnish, paints containing solvents
- Spray can with their contents

Glass, old clothes, small electrical appliances

such as concrete, bricks, tiles, stones, ceramic, excavated soil can be handed in at the following acceptance points for a fee:

The locations can be found at:
www.in-kb.de/container

Building rubble

such as concrete, bricks, tiles, stones, ceramic, excavated soil can be handed in at the following acceptance points for a fee:

- Fort Hartmann Recycling yard
- Caritas-Market (max. 1 m³)

The following things do not belong in building rubble: e.g. rigips, mineral wool, structural elements containing asbestos.

Larger quantities of building rubble and materials containing asbestos are accepted by private disposal companies.

Service

Your waste consultant would be pleased to provide you with additional information:

☎ 0841/305-37 21

abfallberatung@in-kb.de

Waste collection points

Recycling yard Süd

Am Hochfeldweg 10, 85051 Ingolstadt
☎ 0841/305-37 21, www.in-kb.de, abfallberatung@in-kb.de
March - Oct: Mon - Fri 9.00 a.m. - 6.00 p.m.,
Sat 9.00 a.m. - 2.00 p.m.
Nov - Febr: Mon - Fri 9.00 a.m. - 5.00 p.m.,
Sat 9.00 a.m. - 2.00 p.m.
Waste paper, electronic devices, green waste (up to 1m³ free of charge), scrap metal, building rubble (up to max. 200 litres), bulky waste/furniture wood, Caritas used goods collection points

Fort Hartmann Recycling yard

Ochsenmühlstraße 38, 85049 IN-Friedrichshofen
☎ 0841/305-37 21, www.in-kb.de, abfallberatung@in-kb.de
March - Oct Mon/Tue/Thu/Fri 9.00 a.m. - 6.00 p.m.
Wed closed, Sat 9.00 a.m. - 1.00 p.m.
November - February Mon - Fri 9.00 a.m. - 5.00 p.m.
Building rubble (up to max. 200 liters), green waste (up to 1m³ free of charge), scrap metal, paper, small electrical appliances, bulky waste/furniture wood

Caritas-Market

Second-hand market and recycling center
Carl-Benz-Ring 16-18, 85080 Gaimersheim
☎ 0841/49018-615
Mon - Fri 9.00 a.m. - 5.45 p.m., Sat 9.00 a.m. - 1.45 p.m.
Reusable/functional goods, bulky waste, recyclable materials, electrical appliances, rubble (up to max. 200 liters)

Hazardous waste collection point

Hindemithstraße 32, 85057 Ingolstadt, ☎ 0841/305-37 24, -37 21
Mon - Thu 8.00 a.m. - 5.00 p.m., Fri 8.00 a.m. - 1.00 p.m.
www.in-kb.de, abfallberatung@in-kb.de
Hazardous waste, used electric/electronic appliances

Waste Utilisation Plant (MVA) • www.mva-ingolstadt.de

Am Mailingner Bach 141, 85055 IN-Mailing
☎ 0841/378-0 • an appointment is necessary
Residual waste, waste wood, no recyclable material

Ingolstädter Kommunalbetriebe AöR

Hindemithstraße 30, 85057 Ingolstadt
☎ bulky waste: 0841/305-37 77
☎ waste advice: 0841/305-37 21
☎ waste bins, fees: 0841/305-33 34
Mon - Thu 8.00 a.m. - 5.00 p.m.,
Fri 8.00 a.m. - 1.00 p.m.
www.in-kb.de, kontakt@in-kb.de



www.in-kb.de

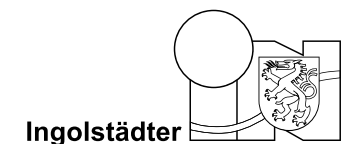
© INKB, 05/2023
IB INKB - 3100

image sources:
INKB, pixabay

 Ein Unternehmen der
Stadt Ingolstadt

Waste Sorting

An important contribution to the protection of the environment and resources



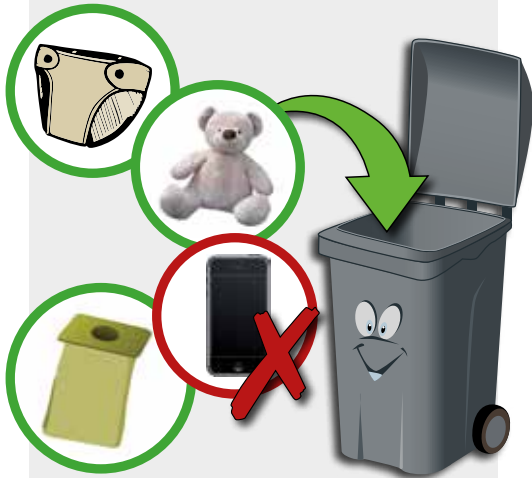
Ingolstädter
Kommunalbetriebe AöR

Ver- und Entsorgung

Residual waste bin

Non-reusable waste

ashes, broken objects (e.g. synthetic material parts, toys, plastic items), light bulbs, hygiene articles (tampons, sanitary towels, condoms), sweepings, small pets litter, small wooden parts, cleaning cloths, nappies, vacuum cleaner bags, cigarette ends, dry paint (solvent-free) and wax



Should the residual waste bin not suffice, you can purchase a waste sack (100 l for 5,00 €, 50 l for 2,50 €) from the hazardous waste collection point and from the customer centre in Ingolstadt, Mauthstraße 4. This will be collected the next time the residual waste bin is emptied. Residual waste can also be handed in at the waste utilisation plant.

We leave incorrectly filled or overfilled bins.

You are welcome to request a fee-based emptying from us on 0841/305-3721.



Organic waste bin

Kitchen waste in organic waste bags: (NO plastic bags!)

residual vegetables, salad and fruit, (spoiled) residual food, potato peel, egg shells, citrus and fruit peel, nutshells, tea bags, coffee grounds with filter paper, kitchen paper towels

Garden waste:

plant residues, foliage, wilted flowers, soil from plant pots, lawn, tree and bush cuttings



You can obtain organic waste bags from the hazardous waste collection point and from the customer centre in Ingolstadt, Mauthstraße 4, for free of charge.

Note! Please do NOT use compostable foil bags! These prevent recycling.



recycling islands

container for glass, old clothes and small electrical appliances



Paper bin

Paper & cardboard

newspapers, illustrated catalogues, brochures, booklets, cardboard, writing paper, clean wrapping paper, cardboard packaging, cardboard boxes



You can hand large quantities of used paper and cardboard to:

- Recycling yard Süd
- Fort Hartmann Recycling yard
- Caritas-Market

glass container

Please throw according to their colours and note the permitted times for the glass disposal!

Yellow Sack

Packaging material with the "Green Point"

metal and tinplate cans, aluminium and aluminium foil packaging, milk and juice cartons, Tetra Pak, composite and plastic packaging, polystyrene (from packaging), empty paint buckets, PET bottles



The Duale System Deutschland is responsible for the distribution and disposal of the yellow sacks.

You can obtain additional yellow sacks from here:

- Büchl company
- Recycling yard Süd
- Fort Hartmann Recycling yard
- Hazardous waste collection point
- Customer center Ingolstadt, Mauthstraße 4



Don't forget the emptying dates with the

INKB waste app.

www.in-kb.de/app

